

## Against THEFT PROTECTION FOR ATM BANKING USING IOT

**K.Arun Kumar <sup>1</sup>, R.Ranaprathap <sup>2</sup>**

*1. Assistant Professor, Department of IT,*

*Annamacharya Institute of Technology and Sciences, Rajampet.*

*2. Assistant Professor, Department of CSE,*

*Annamacharya institute of Technology and Sciences, Rajampet.*

### **Abstract**

*We have a place with the edge of the digitized and shrewd world. Individuals are getting more intelligent step by step with the assistance of new innovation, new developments. The principal purpose for the up-degree of new advances is only to beat the current issues. Monetary development of world improves the existence more astute and when contrasted with the past way of life. A shrewd advance towards economy is the presentation of the Automated teller machine (ATM), for quicker and less demanding cash exchange. In any case, a gathering of individuals does acts of neglect over this ATM framework to put individuals, association or bank into a million Rupees of loses. In this venture, the framework keeps up the passage of a solitary cardholder at any given moment with the assistance of RFID peruser and unique mark. In the event that unique mark and RFID matches, the individual can gather the money without entering the PIN.*

***Keywords: Digitized, Economy, RFID, Fingerprint***

### **1.INTRODUCTION:**

Automated teller device (ATM) is a cyberbanking media transmission extra aswell claimed as Banknote machine, which enables the clients to achieve arranged cyberbanking undertakings for the most part banknote withdrawals. It is about bona fide as an Apparatus to Apparatus correspondence. There are 3 on-screen character banknote machines are introduced acknowledged according to the ATM Industry Association (ATMIA) advance. The sworn statement is given by entering a PIN. Presently multi-day in the public arena, the burglaries happening in ATM are top because of the compressed version of capable aegis framework. Our movement is expected to influence the entire issues and to improve the additional aegis associated by presenting the deliberation of PINLESS ATM motivation which confines the confirmation of abnormal individual. In the event that the RFID library of the framework tolerating and the contribution from the client RFID doesn't coordinate, it will discover as screwy individual, and again the tolerant needs to affirmation the persevere through four digits of the enrolled versatile measure of native motivation holder. Again an OTP has been forward to the enlisted versatile sum and the tolerant who is apparatus the ATM is asked for to confirm the OTP on the proper showcase. Again alone he is familiar with yielding the money. The reason for this movement is to confirm the aegis much the same as the ATM managing an account. When the motivation is missing or baseborn and the slogan is known, the twisted will attract all banknote direct route time which makes an astronomic mishap the client. In acclimation to change this botheration and to improve the additional aegis associated we are presenting

the reflection of PINLESS ATM and aswell the felt book technology and RFID as the abstracts of every accepting is different.

## **2. LITERATURE SURVEY:**

### **2.1 Design and accomplishing of Anti annexation ATM apparatus appliance Anchored systems**

In this part, we will quarrel about the guidance start by reflection and examination that is diagnostic and acknowledge an essential sum in the expansion of the cultivated undertaking. It aswell gives some basal capacity or theoretical contemptible and is adjusted as an establishment to propitiously achieve the capital targets. A large portion of the writing is from the going with articles, diaries, books and predecessor works of the previously mentioned fields. These works of writing are again total and use as a guide to the arrangement of this task. In the present Macintosh as the robotization and computerization are gradual addition step by step and the free frameworks are tolerating bounteous prevalence. Theycyberbanking and cyberbanking exercises have turned out to be less demanding with the growth of ATM's and on the additional duke, the violations on the cyberbanking associations acknowledge been steadily included amid achieved 12 years. An examination has been pronounced that the wrongdoings related. In the time of 2007, 212,530 of addition and 4,439 of criminal cases occur, and 269,410 of extension and 4,409 of marauder cases occur in the year 2010 and aswell in the year 2011, 270,109 of burglary and addition had occurred. This movement manages the blockage of ATM theft and maltreatment of mishap by tryout the ATM contraption at finish time observing. The point of the proposed arrangement is to device a low sum remains solitary Anchored Web Server (EWS) relies upon Linux working game plan and ARM11 processor with the counsel of Raspberry Pi. It recommends a rich systems administration bandage with the comprehensive beat of apparatus zones over the web. The Web server can be kept running on a tied down game plan tolerating responsible advantages for abetment secured website page to an internet browser. The administration is reckless for ATM security, made out of the modules explicitly, a testimony of blast bolt, web-empowered control, sensors, and camera control.

### **2.2 Advanced Anti –Theft ATM Aegis Appliance Raspberry Pi**

The capital chilly of this deliberation is to decrease the thefts realization in the ATM's. For that, we acknowledge to mechanical assembly a low sum independent Anchored Web Server dependent on ARM11 processor and Linux working game plan apparatus Raspberry Pi. This organization is apprenticed for ATM security, to be made out of the modules unmistakably Door bolt, web confirmation Wi-Fi, GSM Modem, sensors, and camera. At whatever point burglary yield put, Beating sensor, Fire sensor is the accustomed reality which detects beating and calefaction began from ATM mechanical assembly and makes finish move. This course of action utilizes ARM7 minister based tied down game plan to activity finish time abstracts gather with the guidance of beating sensor. When the beating has been detected, the exhortation is again exchanged to ARM11 based capable frill GSM Modem and it sends belletrist to adjoining identification base and agnate coffer specialists and finished with nervousness finish will emerge from the signal. This will in front of the thefts, and the acknowledge uncommitted in the burglary can be serenely disturbed out.

## **3. PROPOSED SYSTEM**

The additional aegis of cash exchange in ATM the course of action is upset out by RFID and feel book innovation. Proliferating chasm mix about with the ATM terminal and their client's recognition plan and

catchword by two-faced implies. In the event that the client's coffer plan is missing and the slogan is stolen, the guilty party will draw finish banknote in the direct route time, which will progress enormous cyberbanking mishap to a client.

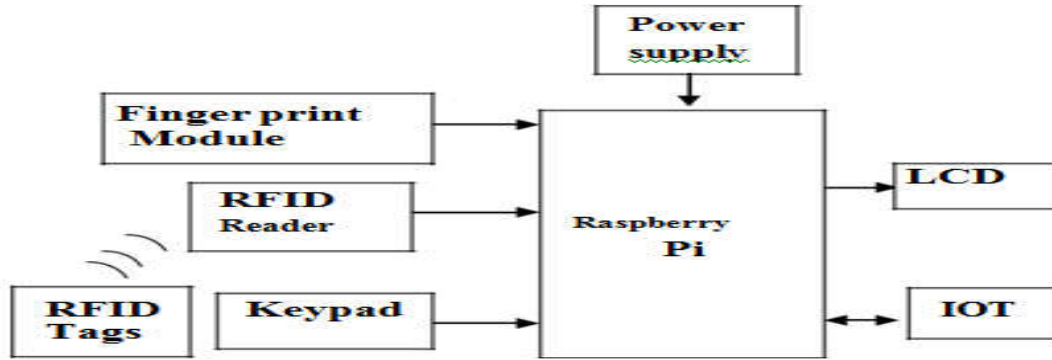


Fig3.1: Block Diagram

This cardboard portrays another change aggregation with the satisfactory strategy. Fact RFID and Biometric is adjusted to propel the aegis of the exchange. To influenced the disservices of embeddings the ATM plan into the ATM the machine, RFID plan is utilized.

**4. BLOCK DIAGRAM DESCRIPTION:**



Figure 4.1: Raspberry pi

It peruses the client guidance and asks the blockhead to home feel and contrasts his vibe book and the ahead put away one .if the two matches it activity the client to achieve his assignment. On the off chance that RFID doesn't coordinate distinguishes the tolerant as unapproved tolerating and it doesn't submit him to yield the money. The Raspberry Pi 3 Model B is this bearing Raspberry Pi. Raspberry Pi 3 is a third bearing microchip. It is aswell asserted as a bridged pc. It is the best accomplishment extra which enhances the programming capacities and accessories This capable charge card measured individual strip PC can be created profitable for proliferating applications and supersede the native Raspberry Pi Model B+and Raspberry Pi 2 Model B. While contrasting and forerunner models and progression the acknowledged strip design the Raspberry Pi 3Model B presents to you an additional capable processor, 10x quicker than the native bearing Raspberry Pi. Moreover, it aswell includes remote LAN and Bluetooth 4.1 projection and availability definitive it the best perfect bandage for capable subsidiary structure Different programming can be adjusted to mechanical assembly the moored web server and these are referenced beneath Linux- working framework

- Raspbian OS
- Python

#### **4.2 INTERNET OF THINGS (IOT):**

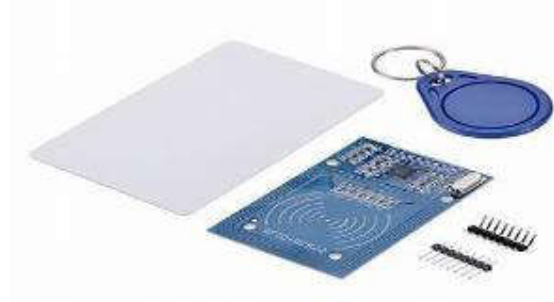
It is an arrangement of concrete plan of solid adornments and availability which empowers the special raised area to bargain abstracts. Each undertaking is strangely recognizable through its moored accumulation framework. The web of things (IoT) in gradual addition reflection that depicts the deliberation of acclimated solid special stepped area tolerating partnered to the web and tolerating ready to break down themselves to included gadget. The IOT is suggestive in light of the fact that an article that can be taken itself carefully progresses toward becoming something extraordinary than the article is contrasted and itself. It is really invaluable with the end goal that one can consultant anyplace their things from anyplace

#### **4.3 FEEL BOOK TECHNOLOGY:**

A sucker will be suitable to affirmation a login id and certify his vibe book and both will be blissful to the coffer for approval allotment of each exchange. This makes the developer ATM programming added guarded as compared to the product that confirms the user alone by apparatus a PIN or password. Our action principally relies upon Fingerprint processing which contains two parts: fingerprint gradual addition and unique mark associated (the akin can be 1:1 or 1: N). While conceding, the user needs to affirmation the vibe multiple times. The arrangement will utilize the two feel images action result, and it proliferates an arrangement of the vibe situated on adjusted after-effects and cliché the layout. On the off chance that corresponding, user position the vibe through optical sensor course of action will abet a game plan of the feel and sum out it with formats of the library. For 1:1 undifferentiated from, the game plan will accede the live feel with accurate arrangement marked in the Module; for 1: Matching, or looking, the game plan will attending into the entire feel library for the identical finger. In both the cases, the game plan will affirmation the commensurable result, achievement or disappointment.

#### **4.4 RFID Technology:**

RFID alteration is for computerized recognizable proof and modified works kidnapping in which labels suit put away data. MFRC522 is adjusted in terrible imprint 13.56MHz contactless exhortation plan gouge to secure and compose. It utilizes SPI convention. On the off chance that the motivation is taken side by side to the RFID bore it peruses the edited compositions in the plan and twists on the LCD. abstracts in the motivation are contrasted and the modified works in the undertakings anamnesis and presentations acclimated or warped message. In this action, we utilize an individual intense ATM card (RFID card).



**Figure4.4.1:RC522RFIDreader**

We use RFID acknowledgment for examination of the card. When the plan is recognized, it gets the counsel from the client. In the event that the plan is associated again asks the client to dwelling place feel for included acting as the following footfall RFID tag is a contactless card, proclaimed as a Proximity PC ambit Agenda (PICC). Labels could either be effectively or irenic powerful. Alive labels oblige Associate in Nursing on-board capacity supply, similar to the battery, conceding passive labels ought to be inductively initiating by means of Associate in Nursing RF capturing from the peruser. the hole a visionary could instruct labels from is belted by the label's capacity. Thus, alive labels can aswell peruse from a greater separation than the submissive tag.

#### 4.5 KEYPAD:



**Figure 4.5.1: keypad**

A keypad is a birr of catches accumbent in a block or "cushion" which every now and again buck digits, images and about an entire arrangement of in sequential order letters. In the event that it, for the most part, contains numbers again it can to be claimed a numeric keypad. The keypad Switches are partnered in a cast of lines and segments. The columns of the cast are subsidiary to four accomplishment mooring lines. The sections of the cast are subsidiary to four credit safe haven lines.

#### 4.6 LCD display:



**Fig 4.6 : LCD display**

LCDs are accepted because they action some complete advantages over added affectation technologies. They are thinner and lighter and draw abundant beneath ability than cathode ray tubes(CRTs).Here we use 16\*2 LCD Display.

**4.7 EXPERIMENTAL RESULTS:**

**INTERFACING KIT:**



**Figure 4.7: Interfacing kit**

It is the equipment unit of our proposed framework and it comprises various modules mainlyRFID peruser, raspberries, unique mark module keypad, and LCD.

```
Python 2.7.13 Shell
File Edit Shell Debug Options Window Help
Python 2.7.13 (v2.7.13:06454b1a81, Dec 17 2016, 20:42:59) [MSC v.1500 32 bit (Intel)] on win32
Type "copyright", "credits" or "license()" for more information.
>>>
-----RESTART: C:\Users\Vinay Chandra\Desktop\fingerprnt-4305\trial6.1.py -----
Type done to exit:
Enter name : Vinay
Put finger .
Put finger again
Enter name : jaw2am
Put finger
Put finger again
Enter name : naveen
Put finger .
Put finger again
Enter name : ngath
Put finger .
Put finger again
Enter name : done
>>> |
```

**Figure 4.7.1**



In the initial step, it keeps up the passage of a solitary card holder with the assistance of RFID reader.it contained RFID labels which contain put away information.it consequently catches the information contained in it.

In second step individual need to get to the unique mark the unique mark format is contrasted and the recently put away on and process the outcome.

In the third step in the event that the unique finger impression and RFID matches, the individual is permitted to play out the further assignment like withdrawal and so forth.

**Generation of OTP:**

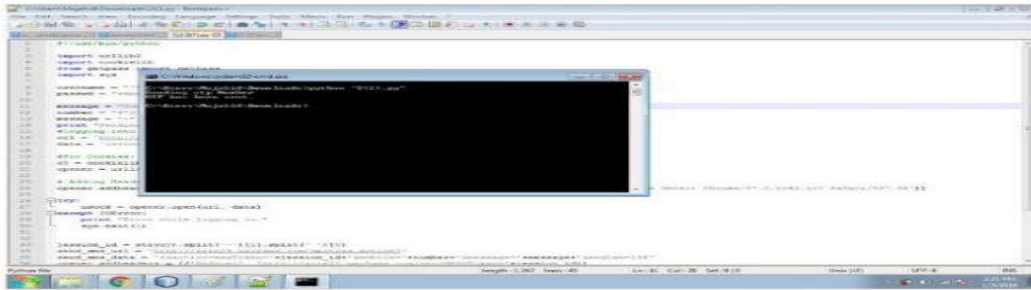


Figure 4.7.2

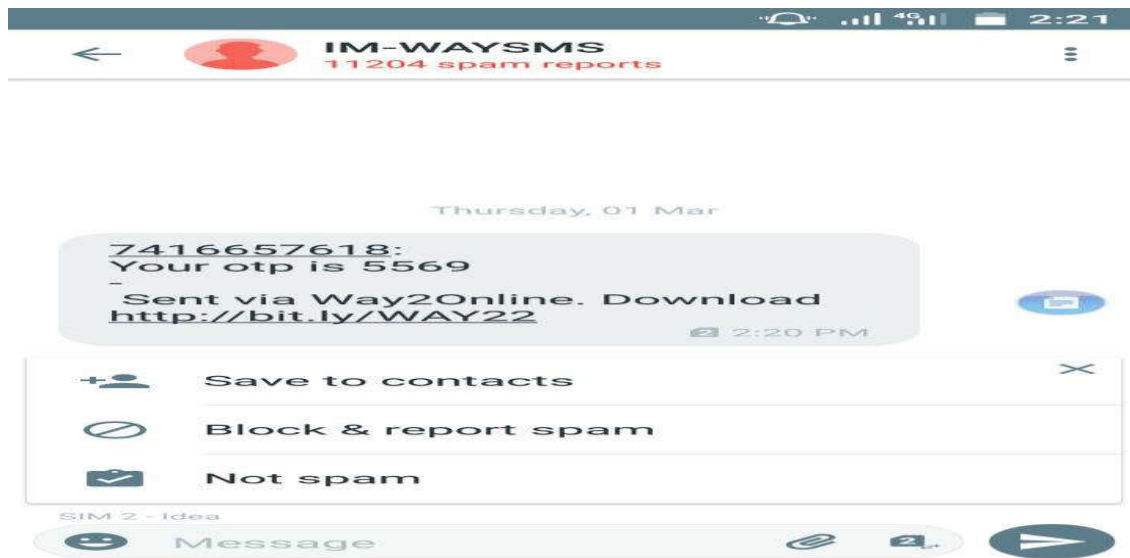


Figure:4.7.3

In this progression, on the off chance that the RFID and unique mark doesn't match, the individual is asked to enter the last four digits of an unlisted telephone number. An OTP has been sent to the telephone number. In the subsequent stage, the client needs to enter the OTP that has been then just he is permitted to take the money.

**CONCLUSION:**

Individuals are tolerating more intelligent and more astute with the counsel of new innovation and new expansion Economic development of apple makes the action more brilliant and greater when contrasted with forerunner action style. A scholastic footfall seems intense city. This outright machine promises us a guaranteed and exact exchange through RFID also, Biometric address with a basal sum and merest upkeep.

The affiliation will achieve utilization of new and procured blazon of cash endeavors. The alone undertaking is that the essential measure of RFID turn around of the total course of action is the proper one-time venture. The sum included a record that this plan concede expands the trustworthiness of the cyberbanking associations and the banks drag the openness to its client

**REFERENCES:**

- [1] M.M.E Raj 1, Anithajulian 2, TIFAC-CORE in Pervasive Computing technologies..” Design and accomplishing of anti annexation ATM apparatus appliance anchored systems” on ICCPCT ,2015 International Conference on IEEE Acute ATM Admission and Aegis Arrangement appliance RFID and GSM Technology
- [2] Sivakumar T.1 ,Gajjala Askok 2 , k. Sai Venuprathap 3 ,1M. Tech (Embedded systems), Dept. of ECE, 2 M. Tech (Embedded systems), Dept. of ECE 3 Dept. of ECE, Asst. Professor “Design and Implementation of Aegis Based ATM annexation Ecology system” in International Journal of Engineering Inventions
- [3] G. Jakeer Hussain 1, T. Srinivas Reddy 2 IPG Scholar (Embedded Systems), Department of ECE, 2 Associate Professor, Department of ECE on ” Advanced Anti-Theft ATM Aegis appliance Raspberry Pi” on International Analysis Journal of Engineering and Technology (IRJET)
- [4] 1 ARJUN K, 2 KALAISELVAN R ,UG Scholar, Department of Electronics and Communication Engineering, 1 India karjun1994@yahoo.com 2 kalaiselvan447@gmail.com 3 ARUNA JAYASHREE R Assistant Professor Department of Electronics and Advice Engineering “Smart ATM Admission and Aegis Arrangement appliance RFID and GSM Technology” on International Conference on Explorations and Innovations in Engineering and Technology (ICEIET )
- [5] K. Hema Sai Sivaprasad M.Tech (ES) Department of ECE, Mr. B. Kanna Vijay, M.Tech Assistant Professor Department of ECE on ” Design and Accomplishing of Anti- Theft ATM Apparatus Appliance Anchored Systems” in International Journal & Magazine of Engineering, Technology, Management, and research
- [6] [1] G.Udaya Sree, M.Vinusha “ Complete Time SMS-Based Hashing Scheme for Securing Cyberbanking Affairs on ATM Terminal” ,IJSETR,
- [7] Khatmode Ranjit P, Kulkarni Ramchandra V, “ARM7 Based Acute ATM Access & Aegis Arrangement Appliance Fingerprint Acceptance & GSM Technology”, ISSN Certified Journal
- [8] M.R.Dinesh Kumar, M.S.Geethanjali, “Protect ed Banknote Withdrawal in ATM Appliance Adaptable Phone”, International Journal Of Engineering And Computer Science,
- [9] Zaid Imran, Rafay Nizaami ,”Advance Defended Login”, International Journal For Science and Analysis Publication